








All Resource Guides and Updates for the 2011 Editorial Calendar, including the 2011 Trade Show in Print, are now available on the website, www.STRUCTUREmag.org. Your information is posted for an entire year on our website! Listings are provided as a courtesy. STRUCTURE® magazine is not responsible for errors.

Company	Product	Description
ADAPT Corporation Phone: 650-306-2400 Email: info@adaptoft.com Web: www.adaptoft.com	ADAPT-Floor Pro 2010 with Vibration Analysis	ADAPT-Floor Pro 2010 now includes integrated vibration analysis for any conventionally reinforced or post-tensioned concrete floor system, with or without beams. The software automatically calculates the natural frequency of the entire modeled floor system or any user designated sub region. Effects of prestressing and cracking are taken into account.
Applied Science International, LLC Phone: 919-645-4090 Email: chamm@appliedscienceint.com Web: www.extremeloading.com	Extreme Loading for Structures 3.0	A non-linear structural analysis software that allows structural engineers to study the 3D behavior of structures through both the continuum and discrete stages of loading. Simulate static and dynamic loads such as blast, seismic, impact, progressive collapse, and wind. ELS automatically calculates plastic hinges, buckling, cracks, and separation.
Autodesk Phone: 603-206-3525 Email: brian.haines@autodesk.com Web: www.autodesk.com	Autodesk® Revit® Structure	Autodesk Revit Structure software offers building information modeling (BIM) to structural engineers, delivering a better coordinated and more reliable model for efficient and more accurate design and documentation. Improve multidiscipline coordination, and incorporate analysis through bidirectional linking to popular structural analysis software, including Autodesk Robot™ Structural Analysis Professional software.
Bentley Systems, Inc.  Phone: 800-236-8539 Email: structural@bentley.com Web: www.bentley.com	Structural Modeler V8i	Structural Modeler is an advanced, yet intuitive and easy-to-use building information modeling (BIM) application that empowers structural engineers and designers to create structural systems for buildings and industrial plants in steel, concrete, and timber with unlimited freedom.
BimSoft Inc. Phone: 514-731-0008 Email: ddechamps@bimsoftinc.com Web: www.bimsoftinc.com	CMS	CMS is a CAD/CAM software application dedicated to the production and manipulation of DSTV-CNC (nc1) file output format. CMS is available standalone or as an extension to Autodesk Inventor. The application allows the user to create, manipulate and read DSTV-CNC (nc1) output files.
CADRE Analytic Phone: 425-392-4309 Email: cadresales@cadreanalytic.com Web: www.cadreanalytic.com	CADRE Pro	Finite element application for Windows with easy-to-use modeling tools. Designed as a practical and affordable tool for architectural, civil, mechanical and structural engineers. CADRE Pro solves beam and plate type structures for internal loads, stress, displacements, vibration modes, and natural frequencies. Advanced features for stability, shock and seismic loads.
Computers & Structures Inc.  Phone: 510-649-2248 Email: info@csiberkeley.com Web: www.csiberkeley.com	SAP2000, ETABS, SAFE, Perform-3D	Computers & Structures, Inc. develops leading structural and earthquake engineering software that is used in more than 160 countries worldwide. From simple building structures to complex long-span bridges, CSI products do it all with an unmatched balance of practicality and sophistication, setting the industry standard for innovation, productivity and integration.
CSC Inc. Phone: 877-710-2053 Email: sales@cscworld.com Web: www.cscworld.com	TEDDS	Join thousands of engineers worldwide and choose TEDDS to automate your daily structural engineering calculations. Using our extensive library of calculations, you can create a single project document in Microsoft Word. Plus you can even write your own calculations. CSC's large development team releases new calculations and updates every month.
Design Data  Phone: 800-443-0782 Email: Info@sds2.com Web: www.sds2.com	SDS/2 Steel Detailing Software	Design Data's SDS/2 software provides automatic detailing, engineering information, and other data for the steel industry's fabrication, detailing and engineering sectors. As BIM software, SDS/2 allows for the sharing of data between all partners on a project, reducing the time required to design, detail, fabricate and erect steel.
Devco Software, Inc.  Phone: 541-426-5713 Email: rob@devcosoftware.com Web: www.devcosoftware.com	LGBEAMER v8	New Release! LGBEAMER v8 designs cold-formed steel cee, channel and zee shapes, including 2007 NASPEC Provisions. HSS Sections per AISC 13 th edition. Single and multi-span, uniform, concentrated, partial span and axial loads. SSMA standard databases and custom sections. Integrated design modules for Shearwalls, X-Braces, Framed Openings, Joists and Rafters.
Digital Canal Phone: 800-449-5033 Email: clint@digitalcanal.com Web: www.digitalcanal.com	Steel Design V4	Steel Design V4 supports AISC 13 th Edition for both the Beam and Beam-Column modules. Incredibly detailed "hand calculation" reports are a "must have" to learn the new AISC code! Steel Design V4 is perfect for anyone who needs to size/check steel members but does not need an expensive frame program.
FabTrol Systems, Inc. Phone: 541-485-4719 Email: info@fabtrol.com Web: www.fabtrol.com	FabTrol MRP Version 3.5	A better way to manage. FabTrol MRP, an integrated steel fabrication management solution, is designed specifically to support the fabrication process in a job-shop environment, from the estimating stage through to job-site delivery. The fully integrated software includes estimating, drawing management, material management, production and shipping modules.
GT STRU DL  Phone: 404-894-2260 Email: casec@ce.gatech.edu Web: www.gtstrudl.gatech.edu	GT STRU DL	Version 31 – Comprehensive linear and nonlinear static and dynamic analysis features for frame and finite element structures. Models plastic hinges, geometric nonlinearities, discrete dampers, tension/compression only members and nonlinear connections. Steel Design including NEW Nuclear Codes and Reinforced Concrete Design. Base Plate Analysis and Multi-Processor Solvers are available.
Hilti, Inc. Phone: 800-879-8000 Email: us-sales@hilti.com Web: www.us.hilti.com	PROFIS Anchor and PROFIS DF	Hilti offers two design programs for structural engineers. PROFIS Anchor performs anchor design for cast-in-place and Hilti post-installed anchors using ACI 318, Appendix D provisions. PROFIS DF Diaphragm performs design calculations for steel deck roof and floor diaphragms using the SDI Diaphragm Design Manual, 3 rd Edition provisions.
IES, Inc.  Phone: 800-707-0816 Email: info@iesweb.com Web: www.iesweb.com	IES VisualAnalysis 8.0	VisualAnalysis 8.0 has over 20 new features and improvements including: Aluminum Design Checks per ADM 2010, simplified wall and slab modeling with Meshed Area "edge supports" and "edge results", a vastly improved reporting system including Single-Member Reports, Significant Performance Improvements, and more!

Company	Product	Description
iLevel by Weyerhaeuser Phone: 888-453-8358 Email: ilevel@weyerhaeuser.com Web: www.iLevel.com	iLevel Forte 2.0	iLevel's free, single-member sizing program designs joists, beams, columns and studs. Forte software performs gravity, wind and seismic load calculations, identifying code-compliant solutions for engineered wood products and dimension lumber. Size a floor for spacing, depth or most economical fit. Predict floor performance, too, with the TJ-Pro Rating System.
MIDASoft Inc. Phone: 212-835-1666 Email: midasoft@midasuser.com Web: www.midasuser.com	midas Civil 2010	midas Civil (Integrated Solution System for Bridges & Civil Structures): 3-D analysis and design software for all bridge structures – curved girder, composite, segmental post-tensioning, Suspension, Cable-Stayed, skewed Slab, Frame and Culvert bridges. Live Load optimizers for AASHTO LRFD, CSA-S6, BD37, BS, Eurocode, etc.
National Concrete Masonry Association Phone: 703-713-1900 Email: dgraber@ncma.org Web: www.ncma.org	Segmental Retaining Walls SRWall and Structural Masonry Design System Ver. 5	SRWall Version 4 for design of both conventional and gravity and soil reinforced walls. Design System Ver 5, concrete and clay masonry software for allowable stress and strength design now updated to include 2008 TMS 402/ACI 530/ASCE 5 and 2009 IBC procedures. Free trials available at the website.
Nemetschek Scia Phone: 877-808-7242 Email: usa@scia-online.com Web: www.scia-online.com	Scia Engineer	Scia Engineer integrates modeling, multi-material design, analysis, reporting, and automatic drawing creation in ONE program. Since everything is linked, a change anywhere is automatically reflected everywhere, saving time and virtually eliminating coordination errors. Easily exchange models with others involved in the design and constructions process. FREE Tryout CD available.
Nuconsteel Phone: 940-891-3050 Email: lrattan@nuconsteel.com Web: www.nuconsteel.com	NUJOIST and NUPANEL Design Software	NUJOIST, a simple and time efficient method of determining the placement of each pre-punched hole for floor joists. NUPANEL Design, state-of-the-art Panel Design Software operating on the Auto Cad platform enables users to acclimate right away and become power users quickly.
Opti-Mate, Inc. Phone: 610-530-9031 Email: optimate@enter.net Web: www.opti-mate.com	Bridge Engineering Software	Software titles include: Merlin Dash for steel and prestressed concrete bridges, Descus I and II for horizontally curved steel I and box girder bridges, TRAP for trusses and SABRE for sign bridges.
POSTEN Engineering Systems Phone: 510-275-4750 Email: sales@postensoft.com Web: www.postensoft.com	POSTEN Multistory	Expand your client list with the most efficient & comprehensive post-tensioned concrete software, that's also the only software specifically designed to produce efficient, cost saving, sustainable designs with automatic documentation of material savings for lead certification, while enabling your architect's creativity and reducing construction & design costs.
Powers Fasteners Phone: 985-807-6666 Email: jzenor@powers.com Web: www.powers.com	 Concrete Anchoring – Post Installed Cast-in-Place and Custom	Powers Design Assist Software: FREE downloadable post installed...cast-in-place & custom anchoring software – to assist in designing to the IBC 2003/06/09 – ACI 318 Appendix D.

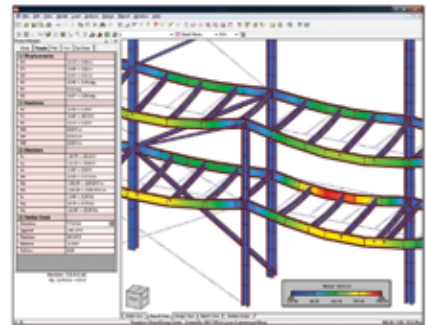
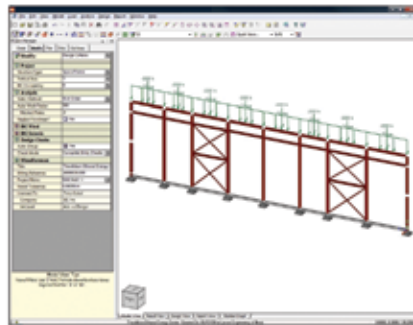
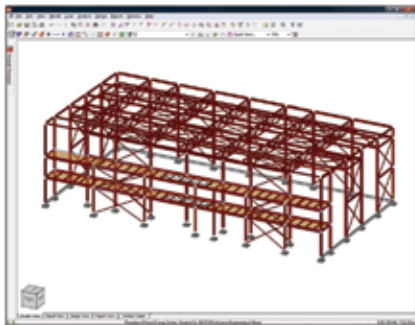
ADVERTISEMENT - For Advertiser Information, visit www.STRUCTUREmag.org

iesweb.com

Friendly structural software, designed for **your** success™



New! VisualAnalysis 8.0







Model * Load * Analyze * Design * Report * Succeed!

New! Aluminum Design
Easier, Better Looking Reports
IBC 2009, ASCE 7-10 Code Checks

iesweb.com
Quick Easy Versatile
800.707.0816

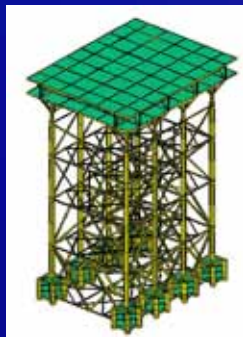
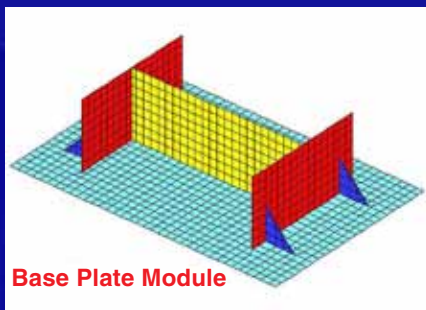


Company	Product	Description
RISA Technologies Phone: 949-951-5815 Email: info@risatech.com Web: www.risa.com	 RISA-3D	RISA-3D designs and optimizes steel, concrete, masonry, wood and cold-formed steel with a fast, intuitive interface. State of the art solution algorithms, customizable reporting options and robust integration with other products such as RISAFloor, RISAFoundation and Revit Structure make RISA-3D the premier choice for general purpose structural analysis and design.
Strand7 pty ltd. Phone: 252-504-2282 Email: anne@beaufort-analysis.com Web: www.strand7.com	Strand7	Strand7 is a sensibly priced FEA system. It comprises preprocessing (with CAD import, automeshing), solvers (linear, non linear, dynamic and thermal) and postprocessing. Release 2.4 has many new features include staged construction, a moving load module, new solvers including quasi-static for shrinkage and creep/relaxation problems.
StruCalc Inc. Phone: 800-279-1353 Email: strucalc@strucalc.com Web: www.strucalc.com	StruCalc 8.0	A premier software solution for the design and analysis of beams, columns, joists, rafters and footings using solid sawn lumber, steel, structural composite, glulams, flitch beams, I-joists, and tube steel. Includes the new 2009 IBC and 2005 NDS code values.
StrucSoft Solutions Inc. Phone: 514-731-0008 Email: d.deschamps@strucsoftsolutions.com Web: www.strucsoftsolutions.com	 MWF	Wall framing extension running on Autodesk Revit Platform for wood and Light Gauge metal construction. MWF is a template driven application that recognizes Revit walls, doors, windows and openings. Automatically generates Stud arrangements, shop drawings, Cut List and CNC output. Integrated engineering option available.
StructurePoint Phone: 847-966-4357 Email: marketing@structurepoint.org Web: www.StructurePoint.org	 Concrete Design Software	StructurePoint, formerly the PCA Engineering Software Group, offers concrete design software programs updated to ACI 318-08 for concrete buildings, concrete structures and concrete tanks. Reinforced concrete structural software includes programs for column design (spColumn), beam design (spBeam), slab design (spSlab), wall design (spWall), and foundation design (spMats).
Struware, Inc. Phone: 904-302-6724 Email: email@struware.com Web: www.struware.com	Struware Code Search	Struware announces a new version of its Code Search program. The software has been simplified, expanded and updated to the 2009 IBC. The program will provide you with all pertinent wind, seismic, snow, live and dead loads in just minutes. Struware also offers other structural software. Demos at the website.
Tekla, Inc. Phone: 877-835-5265 Email: info.us@tekla.com Web: www.tekla.com/us	 Tekla Structures for Engineering	Structural engineers use Tekla Structures to widen their role in building projects, increase the value of structural engineering and ensure the highest-quality results by moving from design-oriented to construction-oriented engineering. Tekla interfaces with several architectural, analysis and design software.
WoodWorks Software Phone: 800-844-1275 Email: sales@woodworks-software.com Web: www.woodworks-software.com	WoodWorks® Design Office 9	WoodWorks Wood Engineering software: Conforms to IBC 2009, ASCE7-05, NDS 2005, SDPWS 2008; SHEARWALLS: designs perforated and segmented shearwalls; generates loads; rigid and flexible diaphragm distribution methods. SIZER: designs beams, columns, studs, joists up to 6 spans; automatic load patterning. CONNECTIONS: Wood to: wood, steel or concrete. Canadian version available.

ADVERTISEMENT - For Advertiser Information, visit www.STRUCTUREmag.org

GT STRUDL

Structural Analysis & Design Software



Multi-Processor Solvers

- Standalone static analysis solvers take advantage of multi-core processors and the large address space available on Windows® 64 Bit operating systems.

Performance Examples

- **Linear Static Analysis:**
 55,000 Joints; 330,000 DOF's
 54 Loading Conditions
 Solution Time (32 bit) 286 Seconds
 Solution Time
 w/2 Processors (64 bit) 36 Seconds
- **Nonlinear Static Analysis:**
 (13th Edition AISC "Direct Analysis Method")
 2,500 Joints; 15,000 DOF's
 88 Loading Conditions
 Solution Time (32 bit) 123 Seconds

**The Best Choice
for
Infrastructure & Nuclear**

Georgia Tech - CASE Center
 Phone: 404-894-2260
 Email: casec@ce.gatech.edu
www.gtstrudl.gatech.edu